



## APPLES

**ENTERPRISE:** Developed by Purdue University, this is a late-maturing, deep red apple with good keeping qualities. Fruit is uniform and medium to large in size. Tree is vigorous and spreading, with good annual

bearing habits. Enterprise is **highly resistant to fire blight and cedar apple rust**. Pollinators: All apples listed (*Semi-Dwarf*)

**GOLDRUSH:** Best known for its remarkable keeping qualities, GoldRush will keep in regular cold storage approximately 10 or 11 months. Fruit is crisp and tart off the tree and develops its sugars in storage. GoldRush resists oxidation when cut, making a nice, yellow sauce, and the fruit also bakes very well. **Resistant to scab and mildew**. Pollinators: All apples listed (*Semi-Dwarf*)

**HONEYCRISP:** The fruit is mostly orange-red with a yellow background. This crisp, juicy, sweet-tart apple has a rich flavor that has made it "#1" in taste panels. The fruit averages 3 inches and stores well. Outstanding winter hardiness. Honeycrisp is moderately **resistant to apple scab**. Tree is non-vigorous and late blooming. Great for eating fresh. Pollinators: All apples listed (*Semi-Dwarf*)



## CHERRIES

**MONTMORENCY (tart):** The most popular cherry in the USA! It bears armloads of ripe, tangy, red cherries, which make mouthwater-

ing, succulent pies and cobblers. Cold-hardy. Ripens in mid-June.

Pollinator: Self-fertile. (*Standard, Height max 15-20ft*)

**BUSH CHERRY- JOEL (tart):** A bush cherry that grows about 4 ft tall, full sun to partial shade, in moderate to well drained soil. Produces average sized cherries, that ripen late August, early September. Cross pollination will produce a larger crop.

**JUBILEUM® (sweet):** An early ripening, very polar, high quality variety, is prized for its large, firm, very dark purple fruit. It's great for fresh eating and for making delicious juice and preserves. Pollinator: Self-fertile. Ripens July-August



## PEACHES

**JOHN BOY®II:** This variety has been tested for many years and consistently matures four to five days later than the original John Boy®. Fruit is large and very firm. The tree is vigorous and productive with good resistance to bacterial leaf spot.



## ASPARAGUS

**JERSEY KNIGHT:** High yields! Extra large, uniform, tender spears. Good for fresh eating, cooking or making salads. Matures from early April through mid-May. Cold-hardy and heat-tolerant. Sold in package of 10 plants.



## BLACKBERRIES

**TRIPLE CROWN:** The plants yield large, glossy black fruits that are pleasantly firm. A tasty blend of sweetness and tartness. Fruit ripens from about mid July to mid August. Plants can be trellised or grown upright. Heat-tolerant.

Self-pollinating. Sold in packages of 2 plants.

**PRIME ARK FREEDOM:** Harvest berries with ease from thornless, upright canes. Primocanes fruit first, followed by a second crop on older canes. Fruit is large, firm, and sweet. Disease-resistant to rust. Everbearing primocane. Early season. Drought tolerant. Cold-hardy. Ripens in July until frost. Self-pollinating. Sold in packages of 2 plants.



## BLUEBERRIES

**BLUERAY:** An early mid season berry. The fruit is very large and firm, but softens quickly which limits shipping value. It produces an aromatic flavor good for pies and jam. The clusters are large and very tight. The bush is vigorous and productive. Self-pollinator.

**PATRIOT:** Quarter-size berries! Big and bountiful, this is the largest early-season blueberry around. Berries have outstanding flavor and are super-hardy. A landscape bonus: snowy blossoms in early summer, stunning orange leaves in fall. Plant multiplies for the largest fruit. Self-pollinator.

**TOP HAT:** Perfect for **container gardening**. Compact plant size at 2 ft by 2 ft with full size, firm, flavorful fruits- perfect for fresh eating. Late ripening in August. Self-pollinator.



## RASPBERRIES

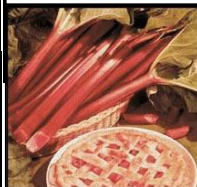
**HERITAGE RED:** Harvest raspberries your very first year. Produces big crops of large, sweet, dark red berries in June, then repeats in September. Perfect for eating fresh, canning, freezing, jams and jellies. Self-supporting upright canes, tolerance for poor soil. Needs a well-drained spot. Sold in packages of 2 plants.



## STRAWBERRIES

**EARLIGLOW:** Many consider Earliglow berries to be the BEST FLAVORED of all the widely grown commercial varieties. It is the earliest producing with medium sized berries. It is great for fresh out of the garden eating, jams and freezing. So sweet, no sugar is needed. Earliglow is one of the most widely planted. Sold in packages of 25 plants.

**SEASCAPE:** Released from California in 1992. A very large, hardy, heavy producing variety with firm fruit, good color and flavor when picked ripe. Very good choice for roadside and farmer's markets for summer and fall production.



## RHUBARB

**CRIMSON RED:** This variety is considered by some to be the best flavored rhubarb available with a perfect sweet, tart combination that makes rhubarb so appealing. The stalks will grow about two feet tall and produce good yields of fleshy stalks that are not stringy. Crimson Red shows good weather hardiness and is adaptable to many soil types and growing conditions.

